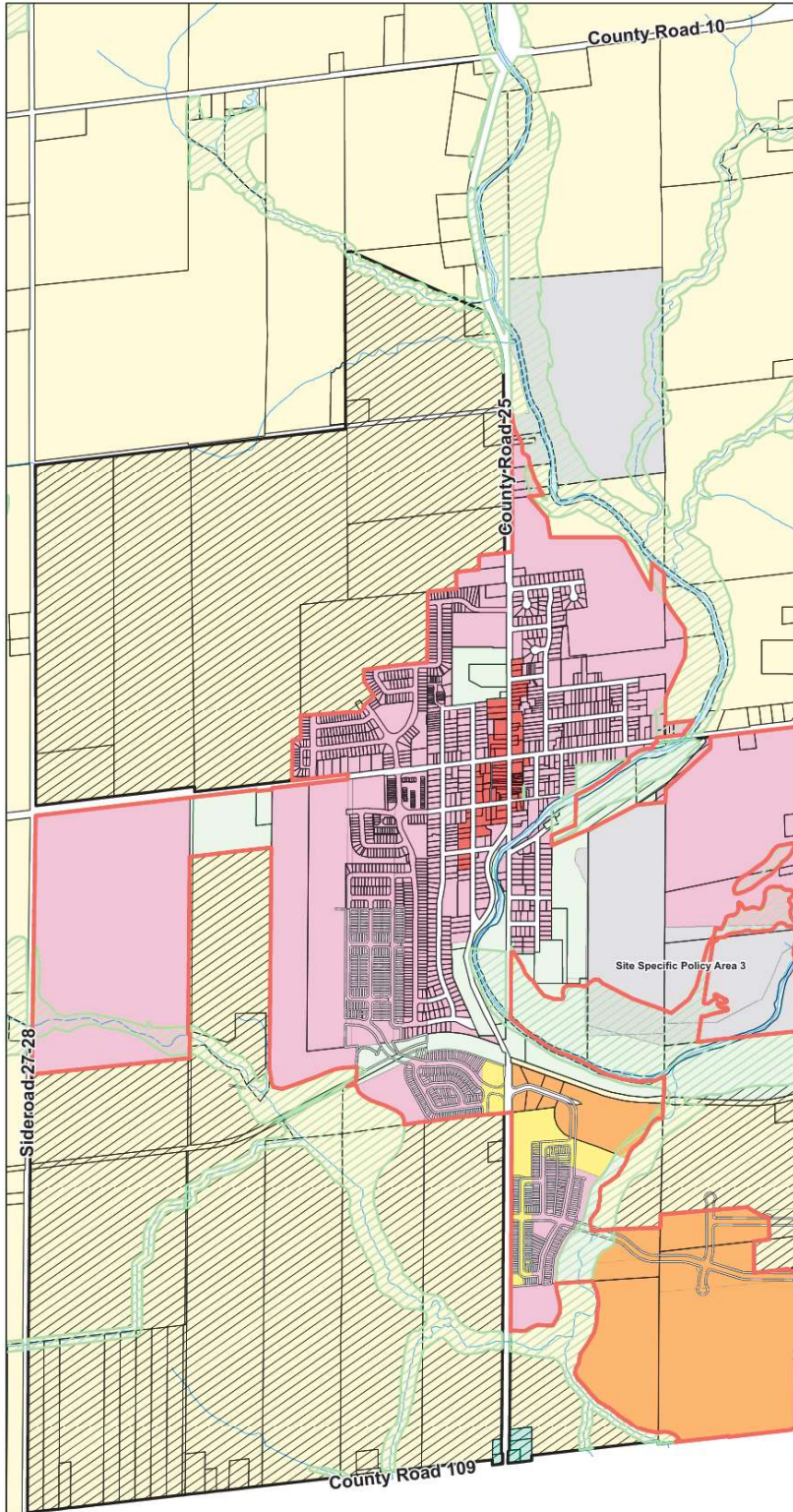


APPENDIX C – Long Term Development Plan

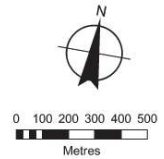


Town of Grand Valley Official Plan Appendix C Long Term Development Plan

Note: Please note that the below long term development plan is a conceptual map intended to illustrate Council's vision for efficient and effective growth, primarily directed along major transportation corridors.

This map is not a finalized plan and should not be interpreted as a definitive outline for future development. The inclusion of lands in this conceptual plan does not guarantee their addition to the settlement area. Any expansion of the settlement area will only occur if a need is demonstrated and if the lands meet the criteria outlined in Section 4.6 of the Official Plan regarding Settlement Area Expansions.

This concept reflects Council's intention to avoid leapfrogging development and to promote a balanced and well-considered approach to growth. Further studies and evaluations will be required before any decisions are made regarding settlement area boundary expansions.



- Future Urban Expansion
- Settlement Area
- Streams
- Lakes & Rivers
- Environmental Conservation
- Agriculture
- Downtown Commercial
- Employment
- Extractive Industrial
- Gateway
- Mixed Use
- Open Space
- Urban Residential

**FOR ILLUSTRATIVE PURPOSES ONLY.
NOT PART OF THIS OFFICIAL PLAN**