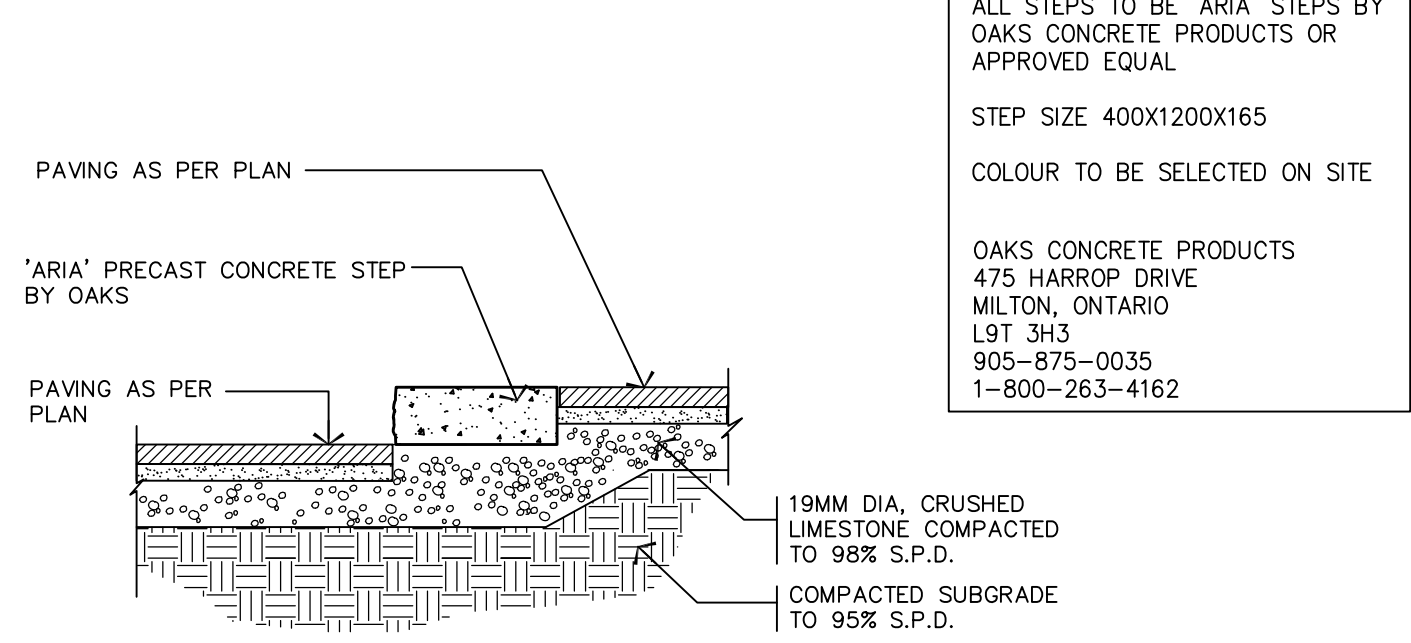
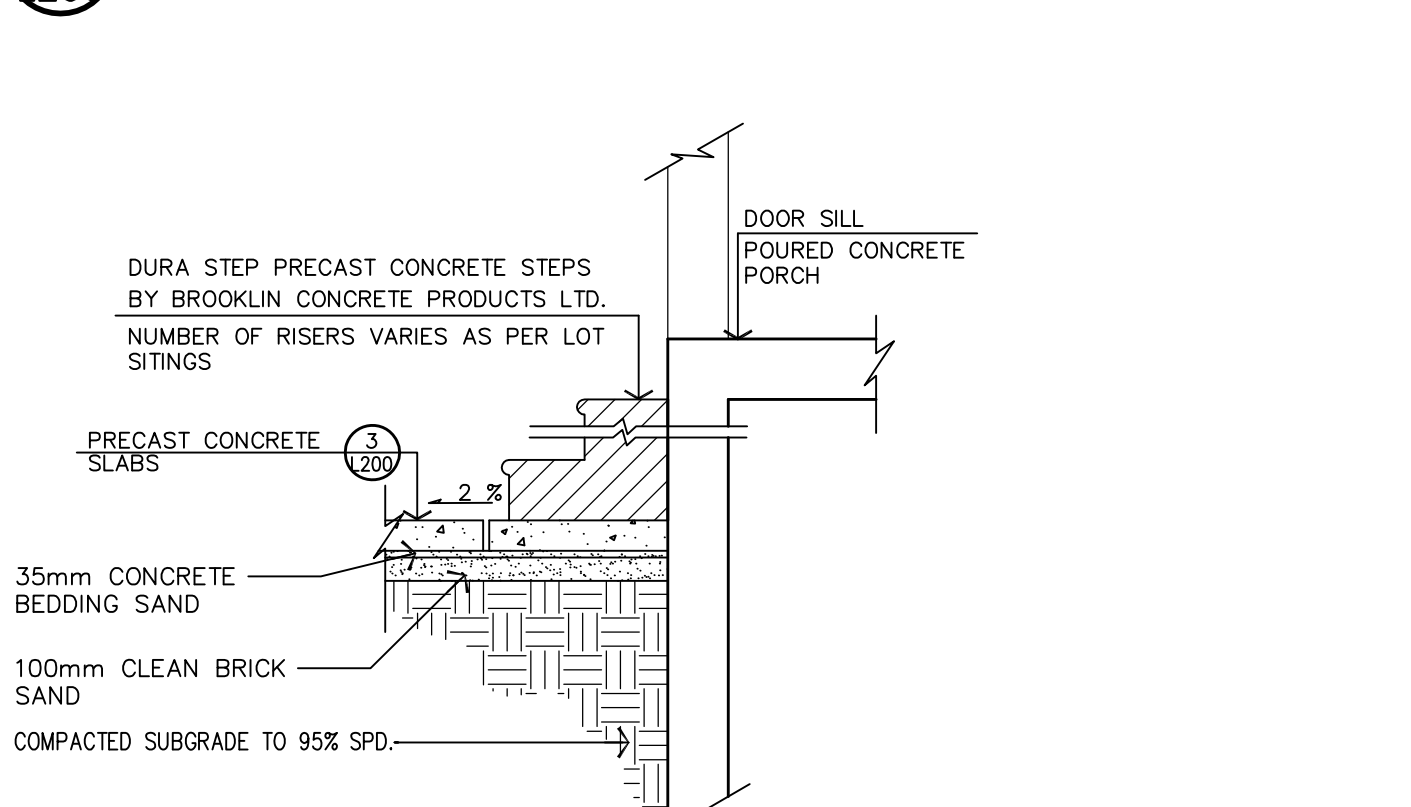


A: 1.8m WOOD PRIVACY FENCE

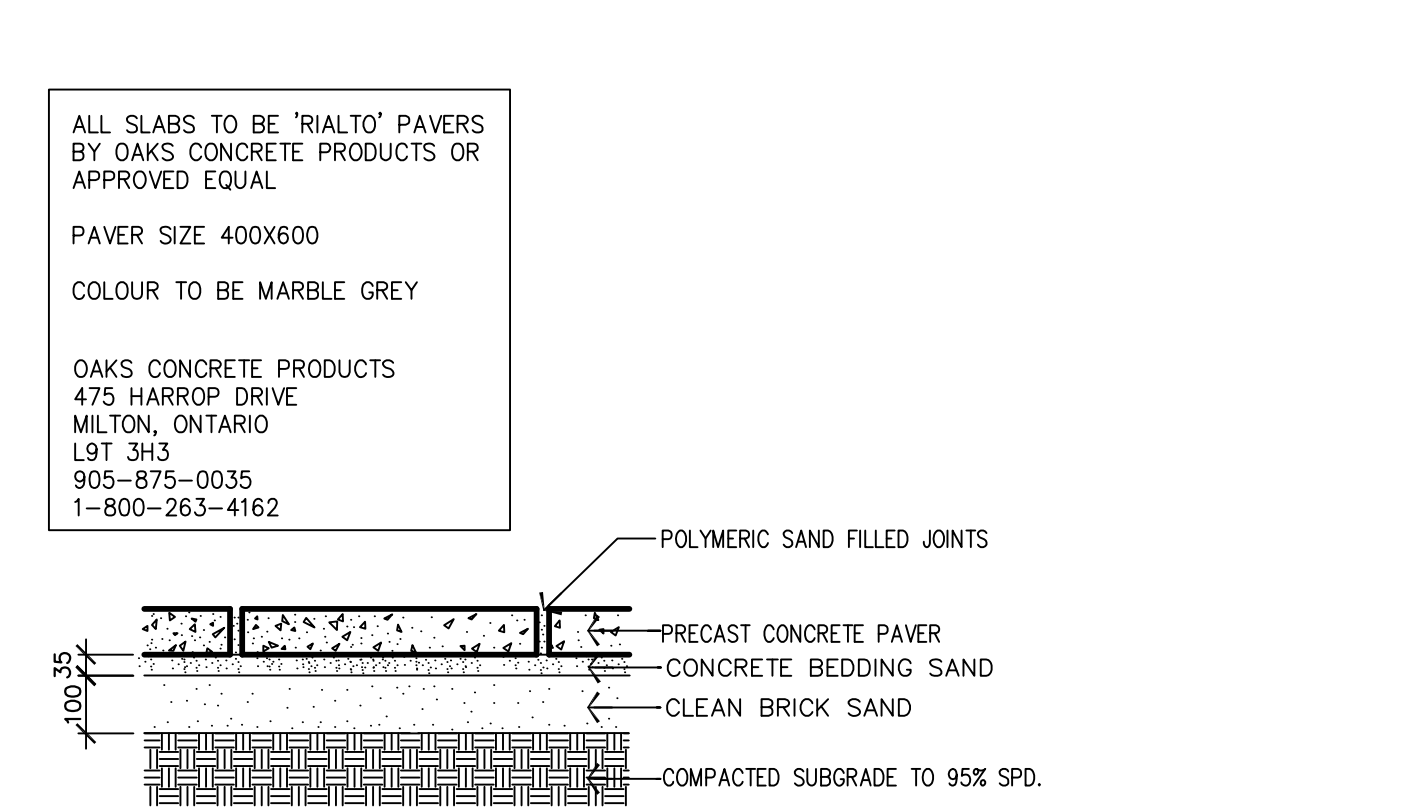
3 200 PRIVACY FENCE & GATE DETAILS N.T.S.



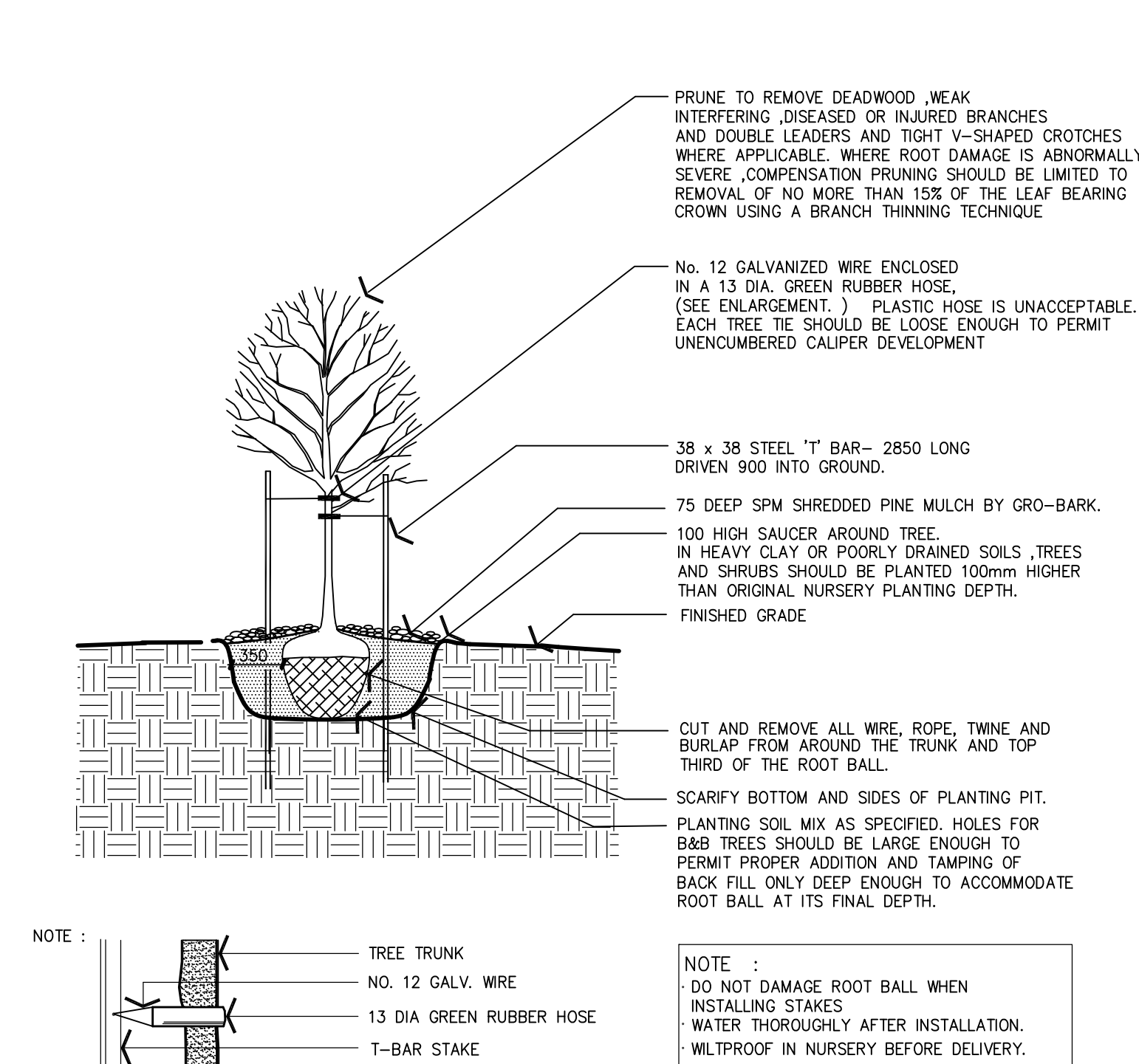
6 200 PRECAST CONCRETE ARIA STEP NOT TO SCALE



5 200 PRECAST CONCRETE DURA STEP NOT TO SCALE

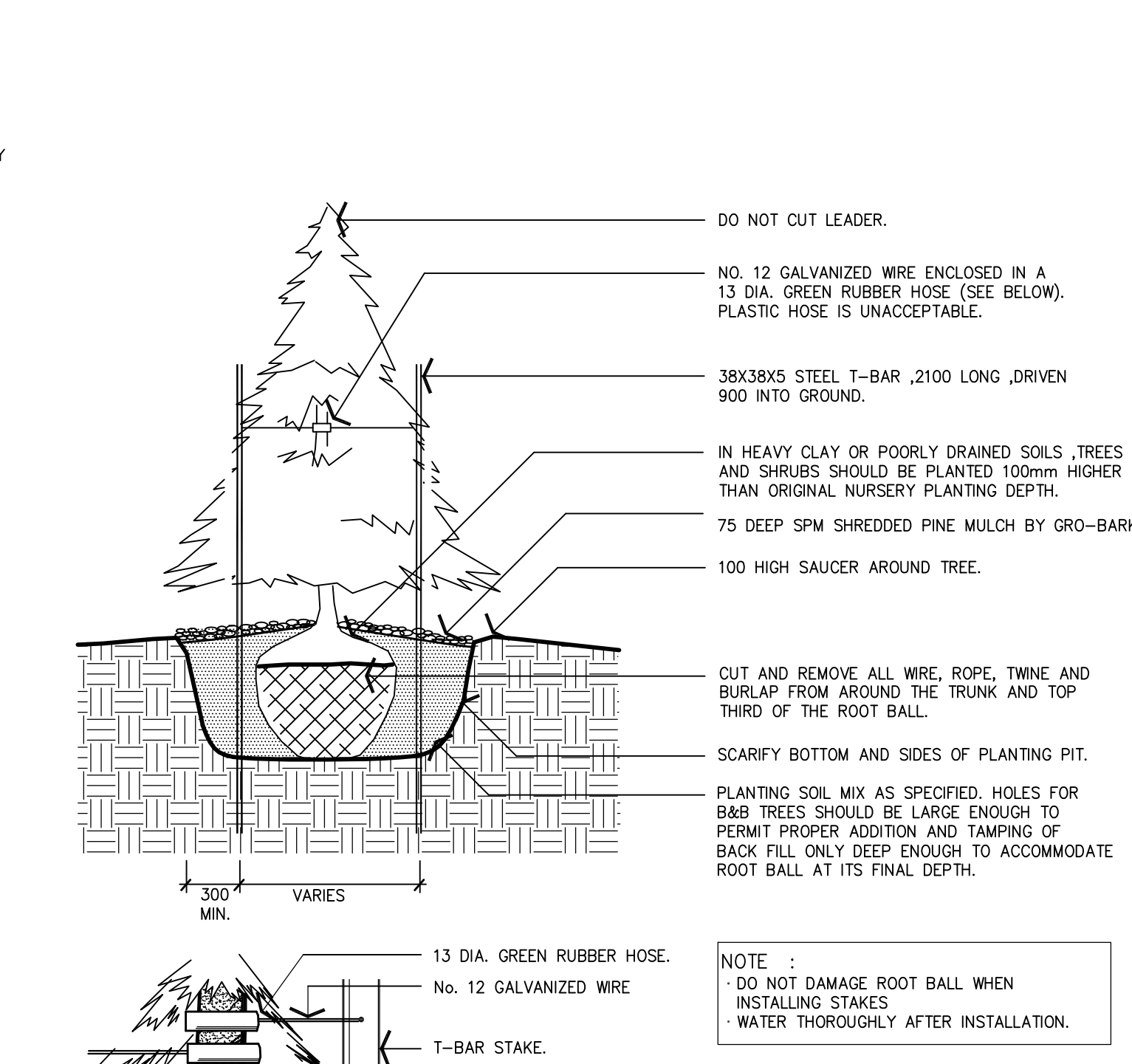


4 200 PRECAST CONCRETE SLABS

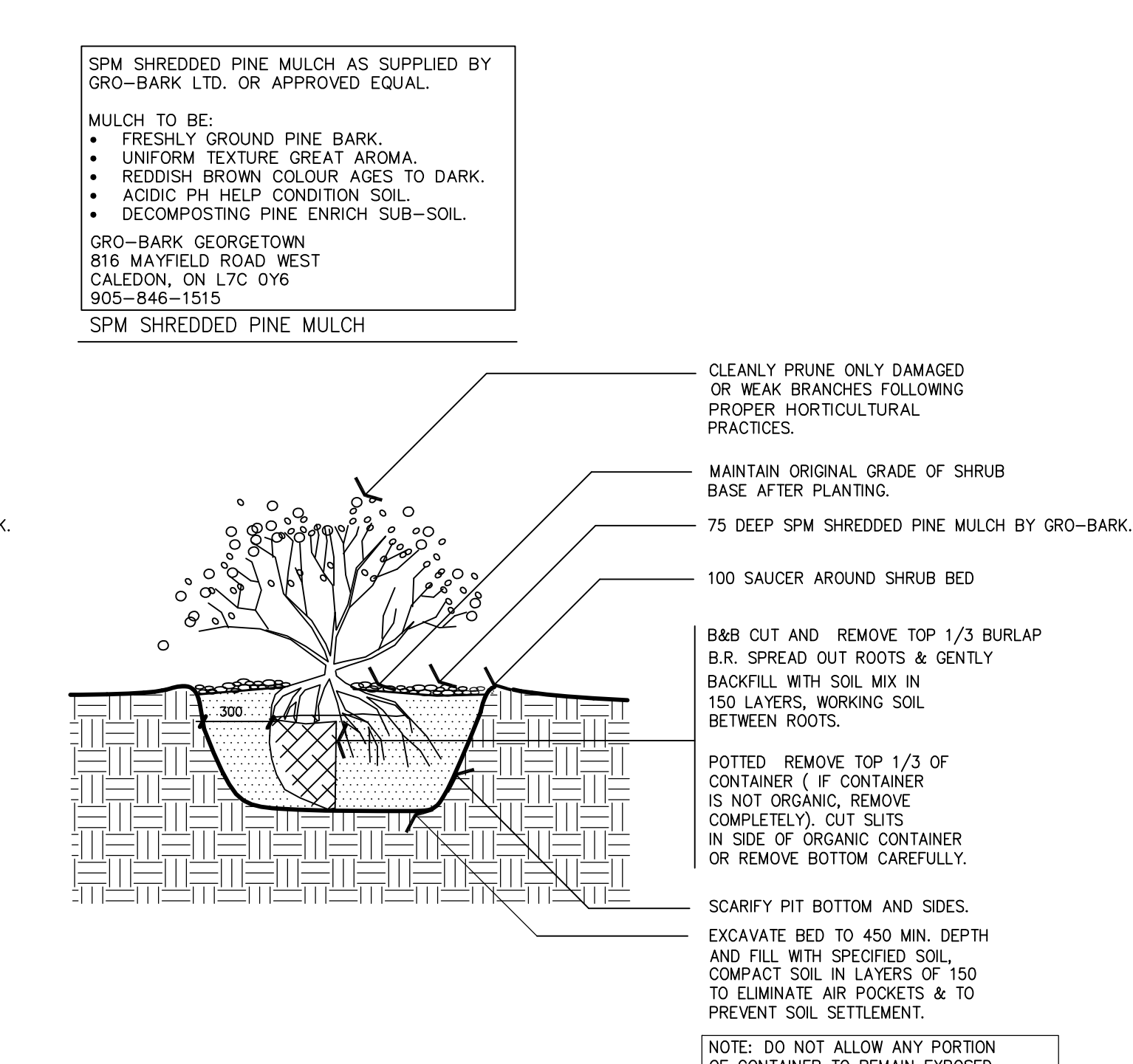


DECIDUOUS TREE PLANTING DETAIL N.T.S.

1 200 PLANTING DETAILS FOR TREES LESS THAN 80 mm CALIPER

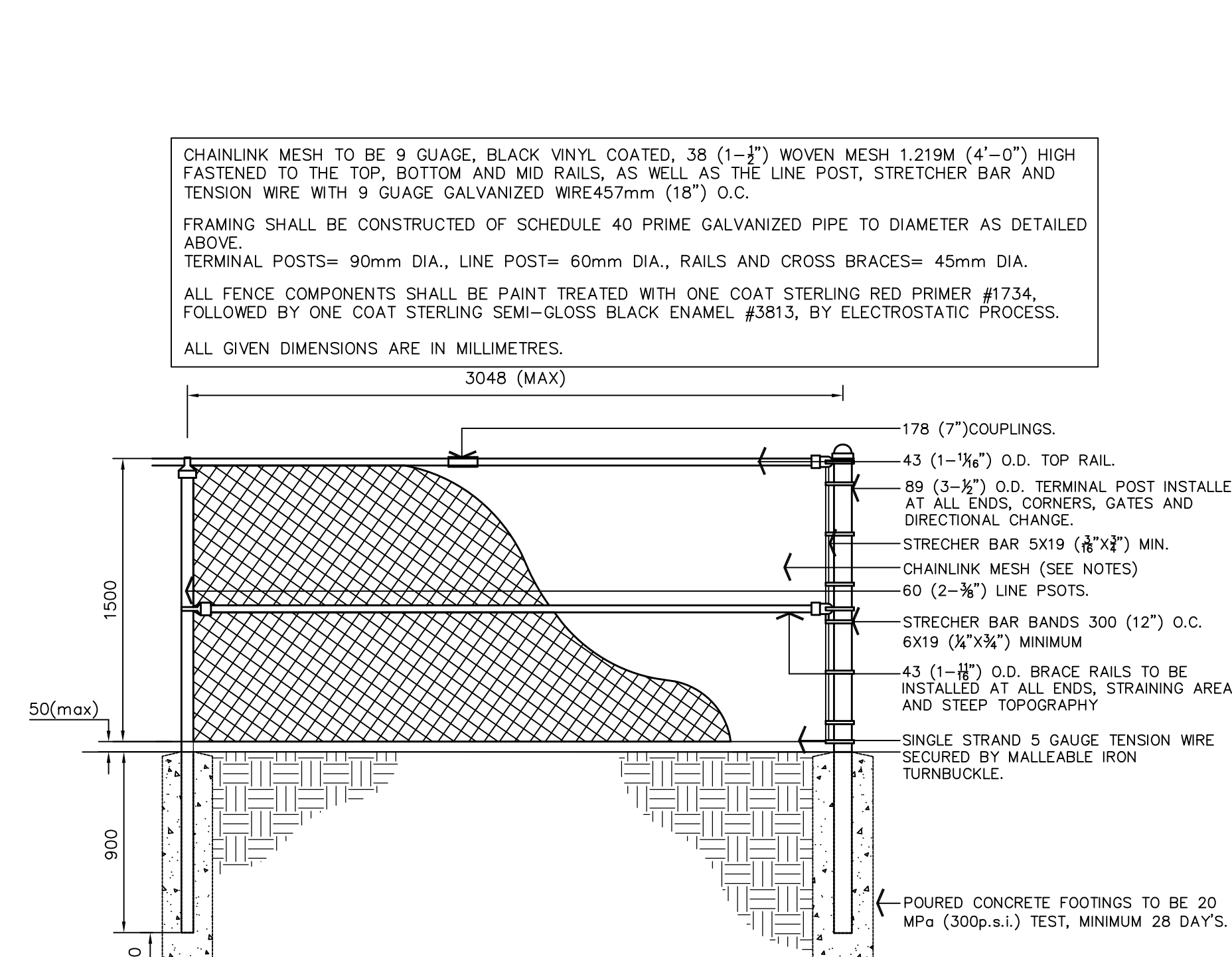


CONIFEROUS TREE PLANTING DETAIL N.T.S.



SHRUB PLANTING DETAIL N.T.S.

2 200 BLACK VINYL CHAIN LINK FENCE - 1.5m ht. N.T.S.



BLACK VINYL CHAIN LINK FENCE - 1.5m ht. N.T.S.

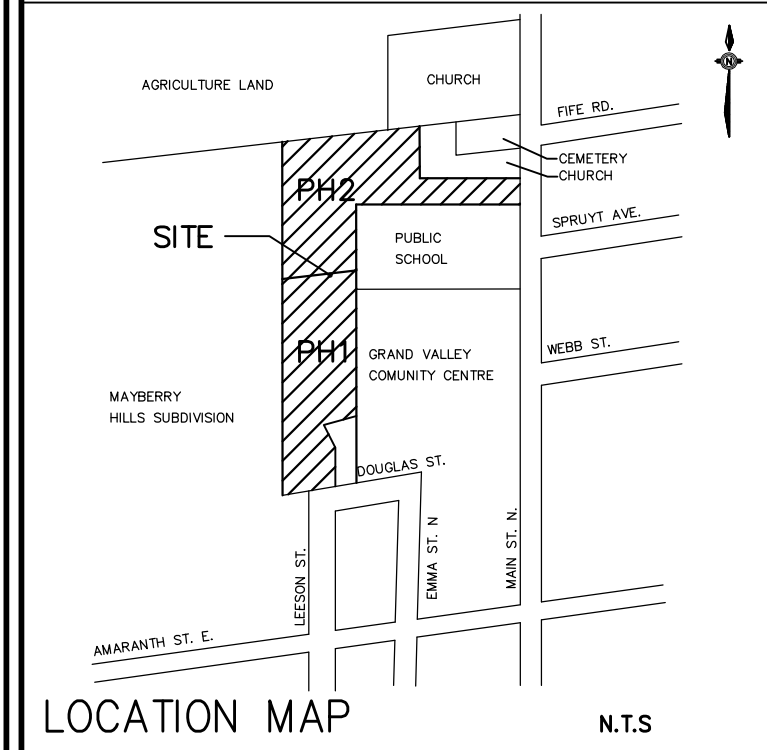
ALL STEPS TO BE 'ARIA' STEPS BY OAKS CONCRETE PRODUCTS OR APPROVED EQUAL.
STEP SIZE 400X1200X165
COLOUR TO BE SELECTED ON SITE
OAKS CONCRETE PRODUCTS
475 HARROP DRIVE
MILTON, ONTARIO
L9T 3H3
905-875-0035
1-800-263-4162

ALL SLABS TO BE 'TIALTO' PAVERS BY OAKS CONCRETE PRODUCTS OR APPROVED EQUAL.
PAVER SIZE 400X600
COLOUR TO BE MARBLE GREY
OAKS CONCRETE PRODUCTS
475 HARROP DRIVE
MILTON, ONTARIO
L9T 3H3
905-875-0035
1-800-263-4162

SPM SHREDDED PINE MULCH AS SUPPLIED BY GRO-BARK LTD. OR APPROVED EQUAL.
MULCH TO BE:
• FRESHLY GROUND PINE BARK
• UNIFORM TEXTURE GREAT AROMA
• REDDISH BROWN COLOUR AGES TO DARK
• ACIDIC PH HELP CONDITION SOIL
• DECOMPOSTING PINE ENRICH SUB-SOIL
GRO-BARK GEORGETOWN
816 MAXFIELD ROAD WEST
CALEDON, ON L7C 0Y6
905-842-1515
SPM SHREDDED PINE MULCH

CHAINLINK MESH TO BE 9 GAUGE, BLACK VINYL COATED, 38 (1-1/2") WOVEN MESH 1.219M (4'-0") HIGH FASTENED TO THE TOP, BOTTOM AND MID RAILS, AS WELL AS THE LINE POST, STRETCHER BAR AND TENSION WIRE WITH 9 GAUGE GALVANIZED WIRE 457mm (18") O.C.
FRAMING SHALL BE CONSTRUCTED OF SCHEDULE 40 PRIME GALVANIZED PIPE TO DIAMETER AS DETAILED ABOVE.
TERMINAL POSTS= 90mm DIA., LINE POST= 60mm DIA., RAILS AND CROSS BRACES= 45mm DIA.
ALL FENCE COMPONENTS SHALL BE PAINT TREATED WITH ONE COAT STERLING RED PRIMER #1734, FOLLOWED BY ONE COAT STERLING SEMI-GLOSS BLACK ENAMEL #3813, BY ELECTROSTATIC PROCESS.
ALL GIVEN DIMENSIONS ARE IN MILLIMETRES.

GENERAL NOTES
• VERIFY ALL DIMENSIONS.
• DO NOT SCALE DRAWINGS.
• REPORT ANY DISCREPANCIES, DISCOVERED ERRORS, OR OMISSIONS TO THE LANDSCAPE ARCHITECT BEFORE PROCEEDING.
• IT IS ADVISED THAT CONTRACTORS CONTACT THE LANDSCAPE ARCHITECT PRIOR TO CONSTRUCTION TO ENSURE THE USE OF THE LATEST REVISED DRAWINGS.
• DRAWINGS AND SPECIFICATIONS ARE THE PROPERTY OF THE LANDSCAPE ARCHITECT.



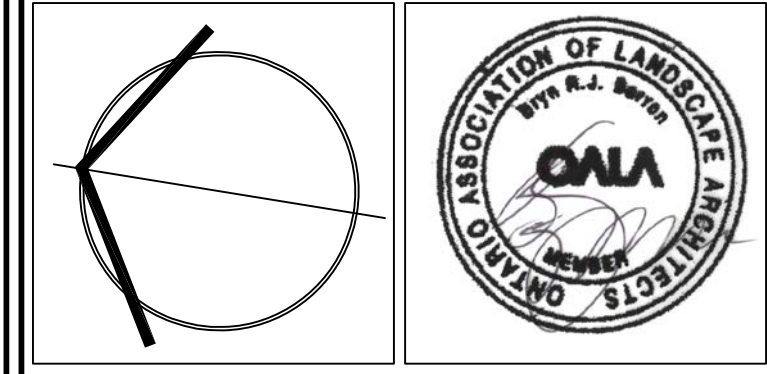
LOCATION MAP N.T.S.

LEGEND

No.	DATE	REVISION	BY
1	OCT. 17, 2017	SUBMISSION	B.B.

It is the responsibility of the Contractor and/or Owner to ensure that the drawings with the latest revisions are used for construction.

REVIEWED BY THE TOWN OF GRAND VALLEY
DATE _____
DIRECTOR OF PUBLIC WORKS



SBK 5770 HURONTARIO STREET, SUITE 320 MISSISSAUGA, ONTARIO, L5R 3G5
T. 416.693.4949 F. 905.712.3101 WWW.STRYBOS.COM

STRYBOS BARRON KING
LANDSCAPE ARCHITECTURE

PROJECT:
GRAND VALLEY TOWNHOUSE BLOCK 30
PART OF LOT 30, CONCESSION 3 DRAFT PLAN TOWN OF GRAND VALLEY 221-149562
CACHET DEVELOPMENTS (GRAND VALLEY) INC.

DRAWING TITLE: **DETAILS**

SCALE: AS SHOWN	PROJECT No. 17-5024
DATE: JUNE 12, 2017	
DRAWN BY: P.H.	DRAWING No. L2003 OF 3
CHECKED BY: B.B.	